

**atp di F. Garzoni**

I - 25074 LAVENONE - BS - ITALY

via del Tram, 8

P.Iva P.Iva IT00232730986

FAX +39 0365 823054

www.atp.it - info@atp.it

**Update: 01-12-2022 10:08:57**

articoli tecnici per l'industria e la casa

termoplastici e metalli

**industrial and housing technical items**

**thermoplastic and metal**



## CATALOGO - MA - Kol aksesuarları



Our online catalogue on [www.atp.it](http://www.atp.it) is always up-to-date.



Endeksi (katalogda görünüm sirasına göre):

- Dikdörtgen rozet

**Minimum order = 1 bag/box**

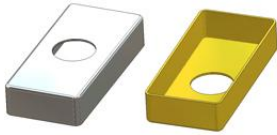
**The measures and weights indicated in the catalogue are nominal values.**

**The descriptions between equals (= =) are special versions without immediate availability on stock.**

**Discard up to a 1% is to be considered normal.**

## Kol aksesuarları / Dikdörtgen rozet / 30x65

Position Kod	Description	Material	Color Üstyüzey	Packaging Ambalaj
750.b MTRR365000/0000	Rectangular rosette 30x65x12(0,8) mm, hole d 16 mm	pirinç	- grezzo	500 x box 500
750.d MLRR365000/0000	Rectangular rosette 30x65x12(1,0) mm, hole d 16 mm	alüminyum	- grezzo	500 x box 500
750.d.05 MLRR365000/0100	Rectangular rosette 30x65x12(1,0) mm, hole d 22 mm	alüminyum	- grezzo	500 x box 500
750.d.08 MLRR365000/0200	Rectangular rosette 30x65x12(1,0) mm, without hole	alüminyum	- grezzo	500 x box 500
750.d.30 MRRR365000/0000	Rectangular rosette 30x65x12(0,8) mm, hole d 16 mm	iron	- grezzo	500 x box 500
750.f MXRR365000/0000	Rectangular rosette 30x65x12(0,8) mm, hole d 16 mm	paslanmaz çelik	- grezzo	500 x box 500
803.b.05 MLRR246000/0000	Rectangular rosette 24x60x6(0,8) mm, hole d 16 mm	alüminyum	- grezzo	250 x box 250
803.c.05 MXRR246000/0000	Rectangular rosette 24x60x6(0,8) mm, hole d 16 mm	paslanmaz çelik	- grezzo	250 x box 250



The oval metal cover does not snap onto the tilt & turn mechanism, but remains fixed by the mounted handle.

To be combined with:

the oval rosettes 30x65x12

4 positions

at pos.304.q , at pos.304.t

from pos.305.a to pos.305.g

from pos.306.a to pos.306.g

from pos.306.h.02 to pos.306.h.09

from pos.306.i.02 to pos.306.i.09

at pos.306.l.05 and pos.306.n.05

from pos.306.t to pos.306.v

the oval rosettes 30x65x12

8 positions

from pos.307.c.01 to pos.307.c.07

from pos.307.c.08 to pos.307.c.30

the oval rosettes 30x65x12

4 positions, of metal

from pos.307.a to pos.307.a.10,

at pos.307.b

and the oval rosettes 30x65 4 positions

for clip-on fixation of the handle

on pos.307.c.50 and 307.c.70