

atp di F. Garzoni

I - 25074 LAVENONE - BS - ITALY

via del Tram, 8

P.Iva P.Iva IT00232730986

FAX +39 0365 823054

www.atp.it - info@atp.it

Update: 26-09-2022 11:16:52

articoli tecnici per l'industria e la casa

termoplastici e metalli

industrial and housing technical items

thermoplastic and metal



CATALOGUS - MA - Deur- en raamkrukdonderdelen



Onze online catalogus op www.atp.it wordt constant actueel gehouden.

Index (in volgorde van verschijning in catalogus):

- Tilt & Turn roses for windows (4-8 positions)

Quantità minima d'ordine = 1 confezione

Le misure e i pesi indicati nel catalogo si intendono nominali.

Le descrizioni tra uguali (= =) sono versioni speciali senza disponibilità immediata a magazzino.

Lo scarto fino ad un 1% è da considerarsi fisiologico.

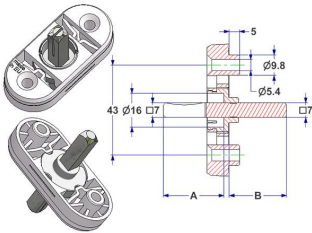
| Positie Artikelcode | Beschrijving | Materiaal | Kleur Finish | Verpakking Omverpakk. |
|-----------------------------|--------------|-----------------------------------|-----------------|--------------------------|
| 304.p.05 MKDV365N16/0001 | | polyamide polyacetaal staal | neutraal - | 500 x doos 500 |
| | | | | |

| Positie Artikelcode | Beschrijving | Materiaal | Kleur Finish | Verpakking Omverpakk. |
|-----------------------------|--------------|-----------------------------------|-----------------|--------------------------|
| 304.p.10 MKDV365N16/0101 | | polyamide polyacetaal staal | neutraal - | 500 x doos 500 |
| | | | | |

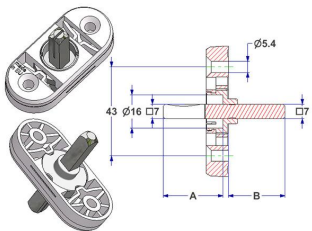
| Positie Artikelcode | Beschrijving | Materiaal | Kleur Finish | Verpakking Omverpakk. |
|--------------------------|--------------|-------------|-----------------|--------------------------|
| 304.q MKDV365B16/0001 | | polyacetaal | neutraal | 250 x zak 2.000 |
| | | | | |

| Positie Artikelcode | Beschrijving | Materiaal | Kleur Finish | Verpakking Omverpakk. |
|--------------------------|--------------|-------------|-----------------|--------------------------|
| 304.t MKDV365B16/0101 | | polyacetaal | neutraal | 250 x zak 250 |
| | | | | |

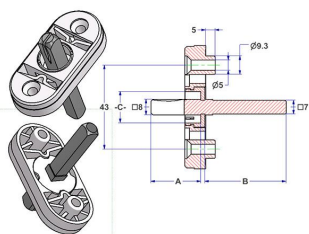
| Positie Artikelcode | Beschrijving | Materiaal | Kleur Finish | Verpakking Omverpakk. |
|--------------------------|--------------|-----------------------------------|-----------------|--------------------------|
| 305.b MKDV365A16/0101 | | polyamide polyacetaal ijzer | neutraal - | 250 x doos 250 |
| 305.c MKDV365A16/0201 | | polyamide polyacetaal ijzer | neutraal - | 250 x doos 250 |
| 305.d MKDV365A16/0301 | | polyamide polyacetaal ijzer | neutraal - | 250 x doos 250 |
| 305.e MKDV365A16/0401 | | polyamide polyacetaal ijzer | neutraal - | 250 x doos 250 |
| 305.f MKDV365A16/1101 | | polyamide polyacetaal ijzer | neutraal - | 250 x doos 250 |
| 305.g MKDV365A16/1201 | | polyamide polyacetaal ijzer | neutraal - | 250 x doos 250 |



| Positie Artikelcode | Beschrijving | Materiaal | Kleur Finish | Verpakking Omverpakk. |
|--------------------------|--------------|-----------------------------------|-----------------|--------------------------|
| 306.c MKDV365A16/0701 | | polyamide polyacetaal ijzer | neutraal - | 250 x doos 250 |
| 306.d MKDV365A16/0801 | | polyamide polyacetaal ijzer | neutraal - | 250 x doos 250 |
| 306.e MKDV365A16/0901 | | polyamide polyacetaal ijzer | neutraal - | 250 x doos 250 |
| 306.f MKDV365A16/1001 | | polyamide polyacetaal ijzer | neutraal - | 250 x doos 250 |
| 306.g MKDV365A16/1301 | | polyamide polyacetaal ijzer | neutraal - | 250 x doos 250 |

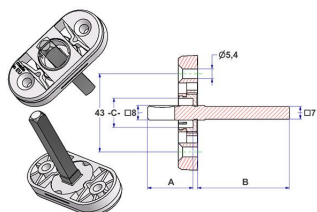


| Positie Artikelcode | Beschrijving | Materiaal | Kleur Finish | Verpakking Omverpakk. |
|-----------------------------|--|-----------------------------------|-----------------|--------------------------|
| 306.h.02 MKDV365C16/0201 | Rosetta ovale 30x65 mm, 4 scatti, foro -C-16 mm, fori vite sporgenti, con ferro quadro 7x8x63 mm zincato, sporgenza ferro lato maniglia -A- 25 mm, lato finestra -B- 36 mm | polyamide polyacetaal ijzer | neutraal - | 250 x doos 250 |
| 306.h.03 MKDV365C16/0301 | Rosetta ovale 30x65 mm, 4 scatti, foro -C-16 mm, fori vite sporgenti, con ferro quadro 7x8x69 mm zincato, sporgenza ferro lato maniglia -A- 25 mm, lato finestra -B- 42 mm | polyamide polyacetaal ijzer | neutraal - | 250 x doos 250 |
| 306.h.04 MKDV365C16/0401 | Rosetta ovale 30x65 mm, 4 scatti, foro -C-16 mm, fori vite sporgenti, con ferro quadro 7x8x78 mm zincato, sporgenza ferro lato maniglia -A- 25 mm, lato finestra -B- 51 mm | polyamide polyacetaal ijzer | neutraal - | 250 x doos 250 |
| 306.h.06 MKDV365C16/1001 | Rosetta ovale 30x65 mm, 4 scatti, foro -C-16 mm, fori vite sporgenti, con ferro quadro 7x8x88 mm zincato, sporgenza ferro lato maniglia -A- 25 mm, lato finestra -B- 61 mm | polyamide polyacetaal ijzer | neutraal - | 250 x doos 250 |
| 306.h.20 MKDV365C18/0001 | Rosetta ovale 30x65 mm, 4 scatti, foro -C-18 mm, fori vite sporgenti, con ferro quadro 7x8x63 mm zincato, sporgenza ferro lato maniglia -A- 25 mm, lato finestra -B- 36 mm | polyamide polyacetaal ijzer | neutraal - | 250 x doos 250 |
| 306.h.25 MKDV365C18/0201 | Rosetta ovale 30x65 mm, 4 scatti, foro -C-18 mm, fori vite sporgenti, con ferro quadro 7x8x78 mm zincato, sporgenza ferro lato maniglia -A- 25 mm, lato finestra -B- 51 mm | polyamide polyacetaal ijzer | neutraal - | 250 x doos 250 |
| 306.h.30 MKDV365C18/0401 | Rosetta ovale 30x65 mm, 4 scatti, foro -C-18 mm, fori vite sporgenti, con ferro quadro 7x8x88 mm zincato, sporgenza ferro lato maniglia -A- 25 mm, lato finestra -B- 61 mm | polyamide polyacetaal ijzer | neutraal - | 250 x doos 250 |



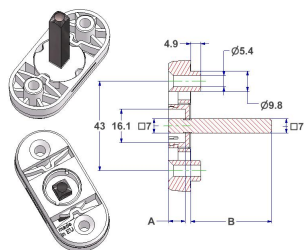
Minimo d'ordine 1000 pz
 Si abbina:
 alle rosette ovali 30x65x12
 da pos.302.a a pos.304.a
 e alla rosetta rettangolare 30x65x12
 da pos.750.b a pos.750.f

| Positie Artikelcode | Beschrijving | Materiaal | Kleur Finish | Verpakking Omverpakk. |
|------------------------------|---|-----------------------------------|-----------------|--------------------------|
| 306.i.02 MKDV365C16/0701 | Rosetta ovale 30x65 mm, 4 scatti, foro -C-16 mm, fori vite rasati, con ferro quadro 7x8x63 mm zincato, sporgenza ferro lato maniglia -A- 25 mm, lato finestra -B- 36 mm | polyamide polyacetaal ijzer | neutraal - | 250 x doos 250 |
| 306.i.03 MKDV365C16/0801 | Rosetta ovale 30x65 mm, 4 scatti, foro -C-16 mm, fori vite rasati, con ferro quadro 7x8x69 mm zincato, sporgenza ferro lato maniglia -A- 25 mm, lato finestra -B- 42 mm | polyamide polyacetaal ijzer | neutraal - | 250 x doos 250 |
| 306.i.04 MKDV365C16/0901 | Rosetta ovale 30x65 mm, 4 scatti, foro -C-16 mm, fori vite rasati, con ferro quadro 7x8x78 mm zincato, sporgenza ferro lato maniglia -A- 25 mm, lato finestra -B- 51 mm | polyamide polyacetaal ijzer | neutraal - | 250 x doos 250 |
| 306.i.06 MKDV365C16/1101 | Rosetta ovale 30x65 mm, 4 scatti, foro -C-16 mm, fori vite rasati, con ferro quadro 7x8x88 mm zincato, sporgenza ferro lato maniglia -A- 25 mm, lato finestra -B- 61 mm | polyamide polyacetaal ijzer | neutraal - | 250 x doos 250 |
| 306.i.20 MKDV365C18/01001 | Rosetta ovale 30x65 mm, foro -C-18 mm, 4 scatti, fori vite rasati, con ferro quadro 7x8x63 mm zincato, sporgenza ferro lato maniglia -A- 25 mm, lato finestra -B- 36 mm | polyamide polyacetaal ijzer | neutraal - | 250 x doos 250 |
| 306.i.25 MKDV365C18/0301 | Rosetta ovale 30x65 mm, 4 scatti, foro -C-18 mm, fori vite rasati, con ferro quadro 7x8x78 mm zincato, sporgenza ferro lato maniglia -A- 25 mm, lato finestra -B- 51 mm | polyamide polyacetaal ijzer | neutraal - | 250 x doos 250 |
| 306.i.30 MKDV365C18/0501 | Rosetta ovale 30x65 mm, 4 scatti, foro -C-18 mm, fori vite rasati, con ferro quadro 7x8x88 mm zincato, sporgenza ferro lato maniglia -A- 25 mm, lato finestra -B- 61 mm | polyamide polyacetaal ijzer | neutraal - | 250 x doos 250 |

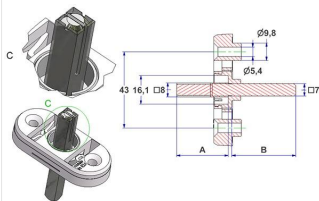


Minimo d'ordine 1000 pz
 Si abbina:
 alle rosette ovali 30x65x12
 da pos.302.a a pos.304.a
 e alla rosetta rettangolare 30x65x12
 da pos.750.b a pos.750.f

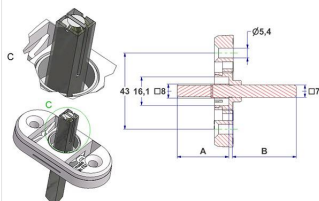
| Positie Artikelcode | Beschrijving | Materiaal | Kleur Finish | Verpakking Omverpakk. |
|-----------------------------|--------------|-----------------------------------|-----------------|--------------------------|
| 306.j.05 MKDV365L16/0001 | | polyamide polyacetaal ijzer | neutraal - | 250 x doos 250 |



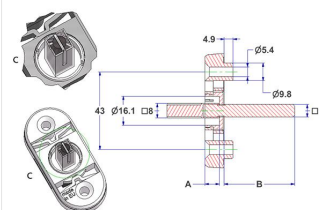
| Positie Artikelcode | Beschrijving | Materiaal | Kleur Finish | Verpakking Omverpakk. |
|-----------------------------|--------------|-----------------------------------|-----------------|--------------------------|
| 306.l.05 MKDV365H16/0001 | | polyamide polyacetaal ijzer | neutraal - | 250 x doos 250 |
| 306.l.07 MKDV365H16/0201 | | polyamide polyacetaal ijzer | neutraal - | 250 x doos 250 |
| 306.l.11 MKDV365H16/0401 | | polyamide polyacetaal ijzer | neutraal - | 250 x doos 250 |



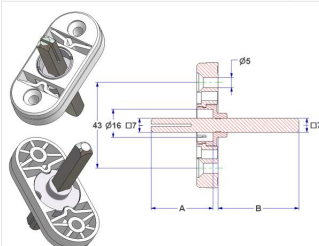
| Positie Artikelcode | Beschrijving | Materiaal | Kleur Finish | Verpakking Omverpakk. |
|-----------------------------|--------------|-----------------------------------|-----------------|--------------------------|
| 306.n.05 MKDV365H16/0301 | | polyamide polyacetaal ijzer | neutraal - | 250 x doos 250 |



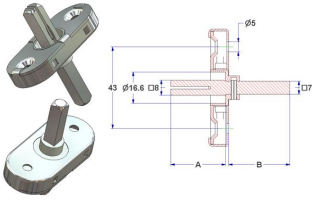
| Positie Artikelcode | Beschrijving | Materiaal | Kleur Finish | Verpakking Omverpakk. |
|-----------------------------|--------------|-----------------------------------|-----------------|--------------------------|
| 306.o.05 MKDV365J16/0001 | | polyamide polyacetaal ijzer | neutraal - | 250 x doos 250 |



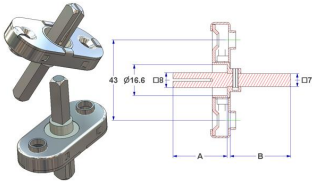
| Positie Artikelcode | Beschrijving | Materiaal | Kleur Finish | Verpakking Omverpakk. |
|--------------------------|--------------|-----------------------------------|-----------------|--------------------------|
| 306.t MKDV365A16/1501 | | polyamide polyacetaal ijzer | neutraal - | 250 x doos 250 |
| 306.v MKDV365A16/1601 | | polyamide polyacetaal ijzer | neutraal - | 250 x doos 250 |



| Positie Artikelcode | Beschrijving | Materiaal | Kleur Finish | Verpakking Omverpakk. |
|-----------------------------|--|---------------|-----------------|--------------------------|
| 307.a MRDV365A16/0000 | | ijzer zamak | - nichelato | 200 x doos 125 |
| 307.a.10 MRDV365A16/0400 | Rosetta ovale 30x65 mm, 4 scatti, fori vite rasati, con ferro quadro 7x8x85 mm zincato, sporgenza ferro lato maniglia -A- 29 mm, lato finestra -B- 55 mm | ijzer messing | - - | 125 x doos 250 |



| Positie Artikelcode | Beschrijving | Materiaal | Kleur Finish | Verpakking Omverpakk. |
|-----------------------------|---|-------------|-----------------|--------------------------|
| 307.a.01 MRDV365A16/0200 | Rosetta ovale 30x65 mm, 4 scatti, fori vite sporgenti, con ferro quadro 7x8x57 mm zincato, sporgenza ferro lato maniglia -A- 29 mm, lato finestra -B- 26 mm | ijzer zamak | - nichelato | 125 x doos 200 |
| 307.b MRDV365A16/0100 | Rosetta ovale 30x65 mm, 4 scatti, fori vite sporgenti, con ferro quadro 7x8x63 mm zincato, sporgenza ferro lato maniglia -A- 29 mm, lato finestra -B- 32 mm | ijzer zamak | - nichelato | 125 x doos 200 |



Si abbina:
 alle rosette ovali 30x65x12
 da pos.302.a a pos.304.a
 e alla rosetta rettangolare 30x65x12
 da pos.750.b a pos.750.f