

**atp di F. Garzoni**

I - 25074 LAVENONE - BS - ITALY

via del Tram, 8

P.Iva P.Iva IT00232730986

FAX +39 0365 823054

www.atp.it - info@atp.it

**Update: 04-08-2022 06:59:17**

articoli tecnici per l'industria e la casa

termoplastici e metalli

**industrial and housing technical items**

**thermoplastic and metal**



## **CATALOG - MA - Accessories for handles**



Our online catalogue on [www.atp.it](http://www.atp.it) is always up-to-date.



Index (in order of appearance in the catalog):

- Tilt & Turn roses for windows (4-8 positions)

**Minimum order = 1 bag/box**

**The measures and weights indicated in the catalogue are nominal values.**

**The descriptions between equals (= =) are special versions without immediate availability on stock.**

**Discard up to a 1% is to be considered normal.**

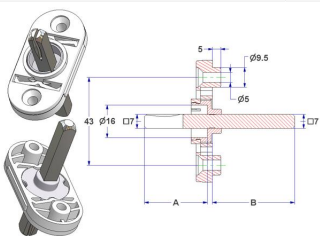
Position Article code	Description	Material	Color Finish	Packaging Outer pack
281.p.05 MKDV306N16/0001	Oval rosette 30x60 mm 4 position, screw holes without nuts, hole -A- d 16 mm, neck -B- d 22 mm, for adjustable spindle toothed on 2 sides	polyamide polyacetal steel	neutral -	500 x box 500
		<p>To be combined with: the oval rosettes 30x60x10 from pos.279.a to pos.281.c and the rectangular rosettes 30x60x9,5 from pos.285.m.20 to pos.285.m.42 and adjustable spindle toothed on 2 sides from pos.313.l.05</p>		

Position Article code	Description	Material	Color Finish	Packaging Outer pack
281.p.10 MKDV306N16/0101	Oval rosette 30x60 mm 4 position, screw holes with nuts, hole -A- d 16 mm, neck -B- d 22 mm, for adjustable spindle toothed on 2 sides	polyamide polyacetal steel	neutral -	500 x box 500
		<p>To be combined with: the oval rosettes 30x60x10 from pos.279.a to pos.281.c and the rectangular rosettes 30x60x9,5 from pos.285.m.20 to pos.285.m.42 and adjustable spindle toothed on 2 sides from pos.313.l.05</p>		

Position Article code	Description	Material	Color Finish	Packaging Outer pack
281.q MKDV306E16/0001	Oval rosette 30x60 mm, 4-8 positions, screw holes without nuts, hole d 18 mm, neck d 22 mm	polyacetal	neutral	250 x bag 250
		<p>To be combined with: the oval rosettes 30x60x10 from pos.279.a to pos.281.c and the rectangular rosettes 30x60x9,5 from pos.285.m.20 to pos.285.m.42 and with the 4 position rotor for clip-on fixation of the handle on pos.313.b.20</p>		

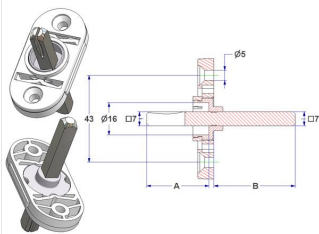
Position Article code	Description	Material	Color Finish	Packaging Outer pack
281.t MKDV306E16/0101	Oval rosette 30x60 mm, 4-8 positions, screw holes with nuts, hole d 18 mm, neck d 22 mm	polyacetal	neutral	250 x bag 250
		<p>To be combined with: the oval rosettes 30x60x10 from pos.279.a to pos.281.c and the rectangular rosettes 30x60x9,5 from pos.285.m.20 to pos.285.m.42 and with the 4 position rotor for clip-on fixation of the handle on pos.313.b.20</p>		

Position Article code	Description	Material	Color Finish	Packaging Outer pack
282.b MKDV306A16/0101	Oval 4 position rosette 30x60 mm, screw holes with nuts, with zinc-plated spindle square 7x61 mm, spindle length on handle side -A- 29 mm, on window side -B- 30 mm	polyamide polyacetal iron	neutral -	250 x box 250
282.c MKDV306A16/0201	Oval 4 position rosette 30x60 mm, screw holes with nuts, with zinc-plated spindle square 7x67 mm, spindle length on handle side -A- 29 mm, on window side -B- 36 mm	polyamide polyacetal iron	neutral -	250 x box 250
282.d MKDV306A16/0301	Oval 4 position rosette 30x60 mm, screw holes with nuts, with zinc-plated spindle square 7x70 mm, spindle length on handle side -A- 29 mm, on window side -B- 39 mm	polyamide polyacetal iron	neutral -	250 x box 250
282.e MKDV306A16/0401	Oval 4 position rosette 30x60 mm, screw holes with nuts, with zinc-plated spindle square 7x74 mm, spindle length on handle side -A- 28 mm, on window side -B- 43 mm	polyamide polyacetal iron	neutral -	250 x box 250
282.f MKDV306A16/1001	Oval 4 position rosette 30x60 mm, screw holes with nuts, with zinc-plated spindle square 7x49 mm, spindle length on handle side -A- 29 mm, on window side -B- 18 mm	polyamide polyacetal iron	neutral -	250 x box 250
282.f.10 MKDV306A16/1201	Oval 4 position rosette 30x60 mm, screw holes with nuts, with zinc-plated spindle square 7x64 mm, spindle length on handle side -A- 28 mm, on window side -B- 32 mm	polyamide polyacetal iron	neutral -	250 x box 250
282.f.20 MKDV306A16/1301	Oval 4 position rosette 30x60 mm, screw holes with nuts, with zinc-plated spindle square 7x80 mm, spindle length on handle side -A- 27 mm, on window side -B- 51 mm	polyamide polyacetal iron	neutral -	250 x box 250
282.g.01 MKDV306A16/01BR	Oval 4 position rosette 30x60 mm, screw holes with nuts, with zinc-plated spindle square 7x61 mm, spindle length on handle side -A- 29 mm, on window side -B- 30 mm	polyamide polyacetal iron	gold bronze -	250 x box 0
282.g.02 MKDV306A16/02BR	Oval 4 position rosette 30x60 mm, screw holes with nuts, with zinc-plated spindle square 7x67 mm, spindle length on handle side -A- 29 mm, on window side -B- 36 mm	polyamide polyacetal iron	gold bronze -	250 x box 250
282.g.03 MKDV306A16/03BR	Oval 4 position rosette 30x60 mm, screw holes with nuts, with zinc-plated spindle square 7x70 mm, spindle length on handle side -A- 29 mm, on window side -B- 39 mm	polyamide polyacetal iron	gold bronze -	250 x box 250
282.g.04 MKDV306A16/04BR	Oval 4 position rosette 30x60 mm, screw holes with nuts, with zinc-plated spindle square 7x74 mm, spindle length on handle side -A- 28 mm, on window side -B- 43 mm	polyamide polyacetal iron	gold bronze -	250 x box 250
282.g.05 MKDV306A16/10BR	Oval 4 position rosette 30x60 mm, screw holes with nuts, with zinc-plated spindle square 7x49 mm, spindle length on handle side -A- 29 mm, on window side -B- 18 mm	polyamide polyacetal iron	gold bronze -	250 x box 250
282.h.05 MKDV306A16/02NA	Oval 4 position rosette 30x60 mm, screw holes with nuts, with zinc-plated spindle square 7x67 mm, spindle length on handle side -A- 29 mm, on window side -B- 36 mm	polyamide polyacetal iron	black -	250 x box 250



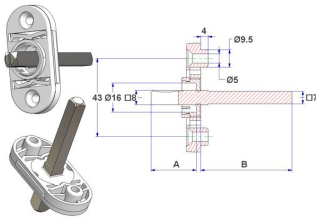
To be combined with:  
the oval rosettes 30x60x10  
from pos.279.a to pos.281.c  
and the rectangular rosettes 30x60x9,5  
from pos.285.m.20 to pos.285.m.42

Position Article code	Description	Material	Color Finish	Packaging Outer pack
283.b MKDV306A16/0601	Oval 4 position rosette 30x60 mm, screw holes without nuts, with zinc-plated spindle square 7x61 mm, spindle length on handle side -A- 29 mm, on window side -B- 30 mm	polyamide polyacetal iron	neutral -	250 x box 250
283.c MKDV306A16/0701	Oval 4 position rosette 30x60 mm, screw holes without nuts, with zinc-plated spindle square 7x67 mm, spindle length on handle side -A- 29 mm, on window side -B- 36 mm	polyamide polyacetal iron	neutral -	250 x box 250
283.d MKDV306A16/0801	Oval 4 position rosette 30x60 mm, screw holes without nuts, with zinc-plated spindle square 7x70 mm, spindle length on handle side -A- 29 mm, on window side -B- 39 mm	polyamide polyacetal iron	neutral -	250 x box 250
283.e MKDV306A16/0901	Oval 4 position rosette 30x60 mm, screw holes without nuts, with zinc-plated spindle square 7x74 mm, spindle length on handle side -A- 28 mm, on window side -B- 43 mm	polyamide polyacetal iron	neutral -	250 x box 250
283.f MKDV306A16/1101	Oval 4 position rosette 30x60 mm, screw holes without nuts, with zinc-plated spindle square 7x49 mm, spindle length on handle side -A- 29 mm, on window side -B- 18 mm	polyamide polyacetal iron	neutral -	250 x box 250
283.g.01 MKDV306A16/06BR	Oval 4 position rosette 30x60 mm, screw holes without nuts, with zinc-plated spindle square 7x61 mm, spindle length on handle side -A- 29 mm, on window side -B- 30 mm	polyamide polyacetal iron	gold bronze -	250 x box 250
283.g.02 MKDV306A16/07BR	Oval 4 position rosette 30x60 mm, screw holes without nuts, with zinc-plated spindle square 7x67 mm, spindle length on handle side -A- 29 mm, on window side -B- 36 mm	polyamide polyacetal iron	gold bronze -	250 x box 250
283.g.03 MKDV306A16/08BR	Oval 4 position rosette 30x60 mm, screw holes without nuts, with zinc-plated spindle square 7x70 mm, spindle length on handle side -A- 29 mm, on window side -B- 39 mm	polyamide polyacetal iron	gold bronze -	250 x box 250
283.g.04 MKDV306A16/09BR	Oval 4 position rosette 30x60 mm, screw holes without nuts, with zinc-plated spindle square 7x74 mm, spindle length on handle side -A- 28 mm, on window side -B- 43 mm	polyamide polyacetal iron	gold bronze -	250 x box 250
283.g.05 MKDV306A16/11BR	Oval 4 position rosette 30x60 mm, screw holes without nuts, with zinc-plated spindle square 7x64 mm, spindle length on handle side -A- 29 mm, on window side -B- 33 mm	polyamide polyacetal iron	gold bronze -	250 x box 250



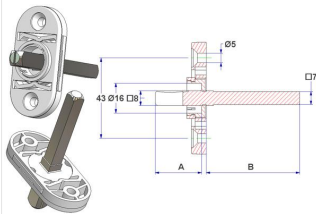
To be combined with:  
the oval rosettes 30x60x10  
from pos.279.a to pos.281.c  
and the rectangular rosettes 30x60x9,5  
from pos.285.m.20 to pos.285.m.42

Position Article code	Description	Material	Color Finish	Packaging Outer pack
283.h.02 MKDV306C16/0201	Oval 4 position rosette 30x60 mm, screw holes with nuts, with zinc-plated spindle square 7x8x63 mm, spindle length on handle side -A- 25 mm, on window side -B- 36 mm	polyamide polyacetal iron	neutral -	250 x box 250
283.h.03 MKDV306C16/0301	Oval 4 position rosette 30x60 mm, screw holes with nuts, with zinc-plated spindle square 7x8x69 mm, spindle length on handle side -A- 25 mm, on window side -B- 42 mm	polyamide polyacetal iron	neutral -	250 x box 250
283.h.04 MKDV306C16/0401	Oval 4 position rosette 30x60 mm, screw holes with nuts, with zinc-plated spindle square 7x8x78 mm, spindle length on handle side -A- 25 mm, on window side -B- 51 mm	polyamide polyacetal iron	neutral -	250 x box 250
283.h.07 MKDV306C16/02BR	Oval 4 position rosette 30x60 mm, screw holes with nuts, with zinc-plated spindle square 7x8x63 mm, spindle length on handle side -A- 25 mm, on window side -B- 36 mm	polyamide polyacetal iron	gold bronze -	250 x box 250
283.h.08 MKDV306C16/03BR	Oval 4 position rosette 30x60 mm, screw holes with nuts, with zinc-plated spindle square 7x8x69 mm, spindle length on handle side -A- 25 mm, on window side -B- 42 mm	polyamide polyacetal iron	gold bronze -	250 x box 250
283.h.09 MKDV306C16/04BR	Oval 4 position rosette 30x60 mm, screw holes with nuts, with zinc-plated spindle square 7x8x78 mm, spindle length on handle side -A- 25 mm, on window side -B- 51 mm	polyamide polyacetal iron	gold bronze -	250 x box 250
283.h.40 MKDV306C16/02NA	Oval 4 position rosette 30x60 mm, screw holes with nuts, with zinc-plated spindle square 7x8x63 mm, spindle length on handle side -A- 25 mm, on window side -B- 36 mm	polyamide polyacetal iron	black -	250 x box 250
283.h.44 MKDV306C16/04NA	Oval 4 position rosette 30x60 mm, screw holes with nuts, with zinc-plated spindle square 7x8x78 mm, spindle length on handle side -A- 25 mm, on window side -B- 51 mm	polyamide polyacetal iron	black -	250 x box 250



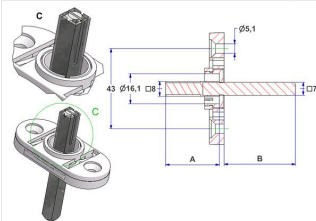
To be combined with:  
the oval rosettes 30x60x10  
from pos.279.a to pos.281.c  
and the rectangular rosettes 30x60x9,5  
from pos.285.m.20 to pos.285.m.42

Position Article code	Description	Material	Color Finish	Packaging Outer pack
283.i.02 MKDV306C16/0701	Oval 4 position rosette 30x60 mm, screw holes without nuts, with zinc-plated spindle square 7x8x63 mm, spindle length on handle side -A- 25 mm, on window side -B- 36 mm	polyamide polyacetal iron	neutral -	250 x box 250
283.i.03 MKDV306C16/0801	Oval 4 position rosette 30x60 mm, screw holes without nuts, with zinc-plated spindle square 7x8x69 mm, spindle length on handle side -A- 25 mm, on window side -B- 42 mm	polyamide polyacetal iron	neutral -	250 x box 250
283.i.04 MKDV306C16/0901	Oval 4 position rosette 30x60 mm, screw holes without nuts, with zinc-plated spindle square 7x8x78 mm, spindle length on handle side -A- 25 mm, on window side -B- 51 mm	polyamide polyacetal iron	neutral -	250 x box 250
283.i.07 MKDV306C16/07BR	Oval 4 position rosette 30x60 mm, screw holes without nuts, with zinc-plated spindle square 7x8x63 mm, spindle length on handle side -A- 25 mm, on window side -B- 36 mm	polyamide polyacetal iron	gold bronze -	250 x box 250
283.i.08 MKDV306C16/08BR	Oval 4 position rosette 30x60 mm, screw holes without nuts, with zinc-plated spindle square 7x8x69 mm, spindle length on handle side -A- 25 mm, on window side -B- 42 mm	polyamide polyacetal iron	gold bronze -	250 x box 250
283.i.09 MKDV306C16/09BR	Oval 4 position rosette 30x60 mm, screw holes without nuts, with zinc-plated spindle square 7x8x78 mm, spindle length on handle side -A- 25 mm, on window side -B- 51 mm	polyamide polyacetal iron	gold bronze -	250 x box 250
283.j.05 MKDV306C16/08NA	Oval 4 position rosette 30x60 mm, screw holes without nuts, with zinc-plated spindle square 7x8x69 mm, spindle length on handle side -A- 25 mm, on window side -B- 42 mm	polyamide polyacetal iron	black -	250 x box 250



To be combined with:  
the oval rosettes 30x60x10  
from pos.279.a to pos.281.c  
and the rectangular rosettes 30x60x9,5  
from pos.285.m.20 to pos.285.m.42

Position Article code	Description	Material	Color Finish	Packaging Outer pack
283.l.05 MKDV306J16/0101	Oval 4 position rosette 30x60 mm, screw holes without nuts, with zinc-plated spindle square 7x8x70 mm, without bushing, square 8 mm over-coated, spindle length on handle side -A- 29 mm, on window side -B- 39 mm	polyamide polyacetal iron	neutral -	250 x box 250



To be combined with:  
the oval rosettes 30x60x10  
from pos.279.a to pos.281.c  
and the rectangular rosettes 30x60x9,5  
from pos.285.m.20 to pos.285.m.42



Position Article code	Description	Material	Color Finish	Packaging Outer pack
283.l.50 MKDV306H16/0201	Oval 4 position rosette 30x60 mm, screw holes with nuts, with zinc-plated spindle square 7x8x70 mm, square 8 mm over-coated, spindle length on handle side -A- 29 mm, on window side -B- 39 mm	polyamide polyacetal iron	neutral -	250 x box 250
		<p>To be combined with: the oval rosettes 30x60x10 from pos.279.a to pos.281.c and the rectangular rosettes 30x60x9,5 from pos.285.m.20 to pos.285.m.42</p>		

Position Article code	Description	Material	Color Finish	Packaging Outer pack
283.l.65 MKDV306H16/0501	Oval 4 position rosette 30x60 mm, screw holes without nuts, with zinc-plated spindle square 7x8x80 mm, square 8 mm over-coated, spindle length on handle side -A- 29 mm, on window side -B- 49 mm	polyamide polyacetal iron	neutral -	250 x box 250
		<p>To be combined with: the oval rosettes 30x60x10 from pos.279.a to pos.281.c and the rectangular rosettes 30x60x9,5 from pos.285.m.20 to pos.285.m.42</p>		