

**atp di F. Garzoni**

I - 25074 LAVENONE - BS - ITALY

via del Tram, 8

P.Iva P.Iva IT00232730986

FAX +39 0365 823054

www.atp.it - info@atp.it

**Update: 04-10-2022 09:47:51**

articoli tecnici per l'industria e la casa  
termoplastici e metalli  
**industrial and housing technical items**  
**thermoplastic and metal**



## CATALOG - MA - ضباقم لى تاراوسسك



Our online catalogue on [www.atp.it](http://www.atp.it) is always up-to-date.



Index (in order of appearance in the catalog):

- Roses and selvages 50 mm

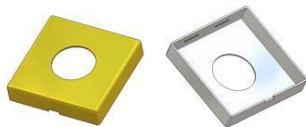
**Minimum order = 1 bag/box**

**The measures and weights indicated in the catalogue are nominal values.**

**The descriptions between equals (= =) are special versions without immediate availability on stock.**

**Discard up to a 1% is to be considered normal.**

Position Article code	Description	Material	Color Finish	Packaging Outer pack.
190.p.01 MTRQ511000/0000	Square rose 50x50x10(1,0) mm, hole d 20 mm	brass	- grezzo	500 x box 500
190.p.02 MTRQ511000/0100	Square rose 50x50x10(1,0) mm, hole d 22 mm	brass	- grezzo	500 x box 500
190.p.03 MTRQ511000/0200	Square rose 50x50x10(1,0) mm, hole d 24 mm	brass	- grezzo	500 x box 500
190.p.04 MTRQ511000/0300	Square rose 50x50x10(1,0) mm, hole d 6 mm	brass	- grezzo	500 x box 500
190.p.05 MTRQ511000/0400	Square rose 50x50x10(1,0) mm, hole d 16 mm	brass	- grezzo	500 x box 500
190.p.06 MTRQ511000/0500	Square rose 50x50x10(1,0) mm, hole d 26 mm	brass	- grezzo	500 x box 500
190.p.07 MLRQ511000/0000	Square rose 50x50x10(1,0) mm, hole d 20 mm	aluminium	- grezzo	500 x box 500
190.p.08 MLRQ511000/0100	Square rose 50x50x10(1,0) mm, hole d 22 mm	aluminium	- grezzo	500 x box 500
190.p.09 MLRQ511000/0200	Square rose 50x50x10(1,0) mm, hole d 24 mm	aluminium	- grezzo	500 x box 500
190.p.10 MLRQ511000/0300	Square rose 50x50x10(1,0) mm, hole d 6 mm	aluminium	- grezzo	500 x box 500
190.p.11 MLRQ511000/0400	Square rose 50x50x10(1,0) mm, hole d 16 mm	aluminium	- grezzo	500 x box 500
190.p.12 MLRQ511000/0600	Square rose 50x50x10(1,0) mm, without hole	aluminium	- grezzo	500 x box 500
190.p.13 MXRQ511000/0000	Square rose 50x50x10(0,8) mm, hole d 20 mm	stainless steel	- grezzo	500 x box 500
190.p.14 MXRQ511000/0100	Square rose 50x50x10(0,8) mm, hole d 22 mm	stainless steel	- grezzo	500 x box 500
190.p.15 MXRQ511000/0200	Square rose 50x50x10(0,8) mm, hole d 24 mm	stainless steel	- grezzo	500 x box 500
190.p.16 MXRQ511000/0300	Square rose 50x50x10(0,8) mm, hole d 6 mm	stainless steel	- grezzo	500 x box 500
190.p.17 MXRQ511000/0400	Square rose 50x50x10(0,8) mm, hole d 16 mm	stainless steel	- grezzo	500 x box 500



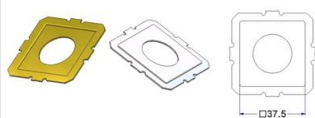
To be combined with:  
square rosettes 50x50x10  
from pos.190.q.01 to pos.190.u.71

Position Article code	Description	Material	Color Finish	Packaging Outer pack.
190.p.21 MTRQ511C00/0000	Square frame 50x50x10(1,0) mm, square hole 37,5 mm	brass	- grezzo	500 x box 500
190.p.25 MXRQ511C00/0000	Square frame 50x50x10(0,8) mm, square hole 37,5 mm	stainless steel	- grezzo	500 x box 500



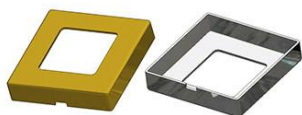
To be combined with:  
square key rosette 50x50x10  
PZ and OB hole  
from pos.190.x.01 to pos.190.z.32  
the medal square 37,5  
from pos.190.p.31 to pos.190.p.52  
from pos.190.v.31 to pos.190.v.33  
from pos.190.v.36 to pos.190.v.38  
from pos.190.u.45 to pos.190.u.55

Position Article code	Description	Material	Color Finish	Packaging Outer pack.
190.p.31 MTRQ511M00/0000	Square medal 37,5x37,5(0,8) mm, hole d 20 mm	brass	- grezzo	250 x box 250
190.p.32 MTRQ511M00/0100	Square medal 37,5x37,5(0,8) mm, hole d 22 mm	brass	- grezzo	250 x box 250
190.p.33 MTRQ511M00/0200	Square medal 37,5x37,5(0,8) mm, hole d 24 mm	brass	- grezzo	250 x box 250
190.p.41 MRRQ511M00/00CL	Square medal 37,5x37,5(0,7) mm, hole d 20 mm	iron	- cromolucido	250 x box 250
190.p.42 MRRQ511M00/01CL	Square medal 37,5x37,5(0,7) mm, hole d 22 mm	iron	- cromolucido	250 x box 250
190.p.43 MRRQ511M00/02CL	Square medal 37,5x37,5(0,7) mm, hole d 24 mm	iron	- cromolucido	250 x box 250
190.p.52 MXRQ511M00/0100	Square medal 37,5x37,5(0,8) mm, hole d 22 mm	stainless steel	- grezzo	250 x box 250



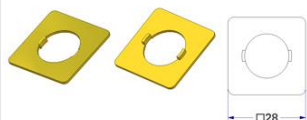
To be combined with:  
the square frames 50x50x10  
with hole square 37,5  
from pos.190.p.21 to pos.190.p.25  
from pos.190.p.93 to pos.190.r.54  
from pos.190.r.81 to pos.190.s.31  
from pos.190.s.81 to pos.190.t.31  
from pos.190.t.81 to pos.190.u.55

Position Article code	Description	Material	Color Finish	Packaging Outer pack.
190.p.71 MTRQ511C01/0000	Square frame 50x50x10(1,0) mm, square hole 28 mm	brass	- grezzo	500 x box 500
190.p.72 MLRQ511C01/0000	Square frame 50x50x10(1,0) mm, square hole 28 mm	aluminium	- grezzo	500 x box 500



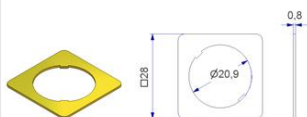
To be combined with:  
the square medals 28 mm  
at pos.190.p.81 and 190.p.85  
the square rosettes 50x50x10  
from pos.190.r.61 to 190.r.71  
from pos.190.s.61 to 190.s.71  
from pos.190.t.61 to 190.t.71  
from pos.190.u.61 to 190.u.71  
at pos.410.b

Position Article code	Description	Material	Color Finish	Packaging Outer pack.
190.p.81 MTRQ511M01/0000	Square medal 28x28(1,0) mm, hole d 16 mm	brass	- grezzo	250 x box 250



To be combined with:  
the square frame 50x50x10  
with hole square 28 at pos.190.p.71

Position Article code	Description	Material	Color Finish	Packaging Outer pack.
190.p.85 MTRQ511M02/0000	Square medal 28x28(0,8) mm, hole d 21 mm	brass	- grezzo	250 x box 250



To be combined with:  
the square frame 50x50x10  
with hole square 28 at pos.190.p.71  
and the square rosette 50x50x10  
for irreversible clip-on fixation  
of the handle on pos.410.b

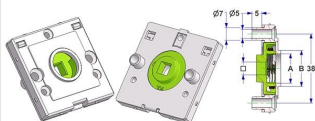
Position Article code	Description	Material	Color Finish	Packaging Outer pack.
190.p.93 MKRQ511C16/05NA	Spring-loaded square rosette 50x50x10 mm, screw head holes without nuts, hole -A- d 16 mm, neck -B- d 21 mm, square 8 mm	polyamide polyacetal stainless steel	black -	500 x box 500
190.q.01 MKRQ511C16/0001	Spring-loaded square rosette 50x50x10 mm, screw head holes without nuts, hole -A- d 16 mm without neck, square 7 mm	polyamide polyacetal stainless steel	neutral -	500 x box 500
190.q.02 MKRQ511C16/0101	Spring-loaded square rosette 50x50x10 mm, screw head holes without nuts, hole -A- d 16 mm, neck -B- d 20 mm, square 7 mm	polyamide polyacetal stainless steel	neutral -	500 x box 500
190.q.03 MKRQ511C16/0201	Spring-loaded square rosette 50x50x10 mm, screw head holes without nuts, hole -A- d 16 mm, neck -B- d 21 mm, square 7 mm	polyamide polyacetal stainless steel	neutral -	500 x box 500
190.q.07 MKRQ511C16/0301	Spring-loaded square rosette 50x50x10 mm, screw head holes without nuts, hole -A- d 16 mm without neck, square 8 mm	polyamide polyacetal stainless steel	neutral -	500 x box 500
190.q.08 MKRQ511C16/0401	Spring-loaded square rosette 50x50x10 mm, screw head holes without nuts, hole -A- d 16 mm, neck -B- d 20 mm, square 8 mm	polyamide polyacetal stainless steel	neutral -	500 x box 500
190.q.09 MKRQ511C16/0501	Spring-loaded square rosette 50x50x10 mm, screw head holes without nuts, hole -A- d 16 mm, neck -B- d 21 mm, square 8 mm	polyamide polyacetal stainless steel	neutral -	500 x box 500
190.q.13 MKRQ511C16/00AG	Spring-loaded square rosette 50x50x10 mm, screw head holes without nuts, hole -A- d 16 mm without neck, square 7 mm	polyamide polyacetal stainless steel	silver -	500 x box 500
190.q.14 MKRQ511C16/01AG	Spring-loaded square rosette 50x50x10 mm, screw head holes without nuts, hole -A- d 16 mm, neck -B- d 20 mm, square 7 mm	polyamide polyacetal stainless steel	silver -	500 x box 500
190.q.15 MKRQ511C16/02AG	Spring-loaded square rosette 50x50x10 mm, screw head holes without nuts, hole -A- d 16 mm, neck -B- d 21 mm, square 7 mm	polyamide polyacetal stainless steel	silver -	500 x box 500
190.q.19 MKRQ511C16/03AG	Spring-loaded square rosette 50x50x10 mm, screw head holes without nuts, hole -A- d 16 mm without neck, square 8 mm	polyamide polyacetal stainless steel	silver -	500 x box 500
190.q.20 MKRQ511C16/04AG	Spring-loaded square rosette 50x50x10 mm, screw head holes without nuts, hole -A- d 16 mm, neck -B- d 20 mm, square 8 mm	polyamide polyacetal stainless steel	silver -	500 x box 500
190.q.21 MKRQ511C16/05AG	Spring-loaded square rosette 50x50x10 mm, screw head holes without nuts, hole -A- d 16 mm, neck -B- d 21 mm, square 8 mm	polyamide polyacetal stainless steel	silver -	500 x box 500



Special gross prices for big quantities:  
see details  
To be combined with:  
square rosettes 50x50x10  
from pos.190.p.01 to pos.190.p.17  
or the square frames 50x50x10  
with hole square 37,5  
from pos.190.p.21 to pos.190.p.25  
and the medal square 37,5  
from pos.190.p.31 to pos.190.p.52

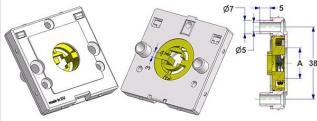
Position Article code	Description	Material	Color Finish	Packaging Outer pack.
190.q.22 MKRQ511C16/2401	Spring-loaded square rosette 50x50x10 mm, screw head holes without nuts, hole -A- d 16 mm, neck -B- d 21 mm, for milled lever	polyamide polyacetal stainless steel	neutral -	500 x box 0
190.q.23 MKRQ511C16/24AG	Spring-loaded square rosette 50x50x10 mm, screw head holes without nuts, hole -A- d 16 mm, neck -B- d 21 mm, for milled lever	polyamide polyacetal stainless steel	silver -	500 x box 500
190.q.24 MKRQ511C16/26AG	Spring-loaded square rosette 50x50x10 mm, screw head holes without nuts, hole -A- d 16 mm, without neck, for milled lever	polyamide polyacetal stainless steel	silver -	500 x box 500
		<p>Special gross prices for big quantities: see details To be combined with: square rosettes 50x50x10 from pos.190.p.01 to pos.190.p.17 or the square frames 50x50x10 with hole square 37,5 from pos.190.p.21 to pos.190.p.25 and the medal square 37,5 from pos.190.p.31 to pos.190.p.52</p>		

Position Article code	Description	Material	Color Finish	Packaging Outer pack.
190.q.25 MKRQ511C16/0601	Spring-loaded square rosette 50x50x10 mm, screw head holes with nuts, hole -A- d 16 mm without neck, square 7 mm	polyamide polyacetal stainless steel	neutral -	500 x box 500
190.q.26 MKRQ511C16/0701	Spring-loaded square rosette 50x50x10 mm, screw head holes with nuts, hole -A- d 16 mm, neck -B- d 20 mm, square 7 mm	polyamide polyacetal stainless steel	neutral -	500 x box 500
190.q.27 MKRQ511C16/0801	Spring-loaded square rosette 50x50x10 mm, screw head holes with nuts, hole -A- d 16 mm, neck -B- d 21 mm, square 7 mm	polyamide polyacetal stainless steel	neutral -	500 x box 500
190.q.31 MKRQ511C16/0901	Spring-loaded square rosette 50x50x10 mm, screw head holes with nuts, hole -A- d 16 mm without neck, square 8 mm	polyamide polyacetal stainless steel	neutral -	500 x box 500
190.q.32 MKRQ511C16/1001	Spring-loaded square rosette 50x50x10 mm, screw head holes with nuts, hole -A- d 16 mm, neck -B- d 20 mm, square 8 mm	polyamide polyacetal stainless steel	neutral -	500 x box 500
190.q.33 MKRQ511C16/1101	Spring-loaded square rosette 50x50x10 mm, screw head holes with nuts, hole -A- d 16 mm, neck -B- d 21 mm, square 8 mm	polyamide polyacetal stainless steel	neutral -	500 x box 500
190.q.37 MKRQ511C16/06AG	Spring-loaded square rosette 50x50x10 mm, screw head holes with nuts, hole -A- d 16 mm without neck, square 7 mm	polyamide polyacetal stainless steel	silver -	500 x box 500
190.q.38 MKRQ511C16/07AG	Spring-loaded square rosette 50x50x10 mm, screw head holes with nuts, hole -A- d 16 mm, neck -B- d 20 mm, square 7 mm	polyamide polyacetal stainless steel	silver -	500 x box 500
190.q.39 MKRQ511C16/08AG	Spring-loaded square rosette 50x50x10 mm, screw head holes with nuts, hole -A- d 16 mm, neck -B- d 21 mm, square 7 mm	polyamide polyacetal stainless steel	silver -	500 x box 500
190.q.43 MKRQ511C16/09AG	Spring-loaded square rosette 50x50x10 mm, screw head holes with nuts, hole -A- d 16 mm without neck, square 8 mm	polyamide polyacetal stainless steel	silver -	500 x box 500
190.q.44 MKRQ511C16/10AG	Spring-loaded square rosette 50x50x10 mm, screw head holes with nuts, hole -A- d 16 mm, neck -B- d 20 mm, square 8 mm	polyamide polyacetal stainless steel	silver -	500 x box 500
190.q.45 MKRQ511C16/11AG	Spring-loaded square rosette 50x50x10 mm, screw head holes with nuts, hole -A- d 16 mm, neck -B- d 21 mm, square 8 mm	polyamide polyacetal stainless steel	silver -	500 x box 500

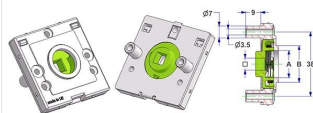


Special gross prices for big quantities:  
see details  
To be combined with:  
square rosettes 50x50x10  
from pos.190.p.01 to pos.190.p.17  
or the square frames 50x50x10  
with hole square 37,5  
from pos.190.p.21 to pos.190.p.25  
and the medal square 37,5  
from pos.190.p.31 to pos.190.p.52



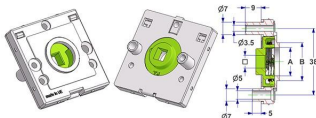
Position Article code	Description	Material	Color Finish	Packaging Outer pack.
190.q.47 MKRQ511C16/27AG	Spring-loaded square rosette 50x50x10 mm, screw head holes with nuts, hole -A- d 16 mm, without neck, for milled lever	polyamide polyacetal stainless steel	silver	500 x box 500
		<p>Special gross prices for big quantities: see details</p> <p>To be combined with: square rosettes 50x50x10 from pos.190.p.01 to pos.190.p.17 or the square frames 50x50x10 with hole square 37,5 from pos.190.p.21 to pos.190.p.25 and the medal square 37,5 from pos.190.p.31 to pos.190.p.52</p>		

Position Article code	Description	Material	Color Finish	Packaging Outer pack.
190.q.49 MKRQ511C16/1201	Spring-loaded square rosette 50x50x10 mm, self-tapping screw holes with nuts, hole -A- d 16 mm, without neck, square 7 mm	polyamide polyacetal stainless steel	neutral -	500 x box 500
190.q.50 MKRQ511C16/1301	Spring-loaded square rosette 50x50x10 mm, self-tapping screw holes with nuts, hole -A- d 16 mm, neck -B- d 20 mm, square 7 mm	polyamide polyacetal stainless steel	neutral -	500 x box 500
190.q.51 MKRQ511C16/1401	Spring-loaded square rosette 50x50x10 mm, self-tapping screw holes with nuts, hole -A- d 16 mm, neck -B- d 21 mm, square 7 mm	polyamide polyacetal stainless steel	neutral -	500 x box 500
190.q.55 MKRQ511C16/1501	Spring-loaded square rosette 50x50x10 mm, self-tapping screw holes with nuts, hole -A- d 16 mm, without neck, square 8 mm	polyamide polyacetal stainless steel	neutral -	500 x box 500
190.q.56 MKRQ511C16/1601	Spring-loaded square rosette 50x50x10 mm, self-tapping screw holes with nuts, hole -A- d 16 mm, neck -B- d 20 mm, square 8 mm	polyamide polyacetal stainless steel	neutral -	500 x box 500
190.q.57 MKRQ511C16/1701	Spring-loaded square rosette 50x50x10 mm, self-tapping screw holes with nuts, hole -A- d 16 mm, neck -B- d 21 mm, square 8 mm	polyamide polyacetal stainless steel	neutral -	500 x box 500
190.q.61 MKRQ511C16/12AG	Spring-loaded square rosette 50x50x10 mm, self-tapping screw holes with nuts, hole -A- d 16 mm, without neck, square 7 mm	polyamide polyacetal stainless steel	silver -	500 x box 500
190.q.62 MKRQ511C16/13AG	Spring-loaded square rosette 50x50x10 mm, self-tapping screw holes with nuts, hole -A- d 16 mm, neck -B- d 20 mm, square 7 mm	polyamide polyacetal stainless steel	silver -	500 x box 500
190.q.63 MKRQ511C16/14AG	Spring-loaded square rosette 50x50x10 mm, self-tapping screw holes with nuts, hole -A- d 16 mm, neck -B- d 21 mm, square 7 mm	polyamide polyacetal stainless steel	silver -	500 x box 500
190.q.67 MKRQ511C16/15AG	Spring-loaded square rosette 50x50x10 mm, self-tapping screw holes with nuts, hole -A- d 16 mm, without neck, square 8 mm	polyamide polyacetal stainless steel	silver -	500 x box 500
190.q.68 MKRQ511C16/16AG	Spring-loaded square rosette 50x50x10 mm, self-tapping screw holes with nuts, hole -A- d 16 mm, neck -B- d 20 mm, square 8 mm	polyamide polyacetal stainless steel	silver -	500 x box 500
190.q.69 MKRQ511C16/17AG	Spring-loaded square rosette 50x50x10 mm, self-tapping screw holes with nuts, hole -A- d 16 mm, neck -B- d 21 mm, square 8 mm	polyamide polyacetal stainless steel	silver -	500 x box 500



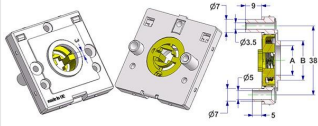
Special gross prices for big quantities:  
see details  
To be combined with:  
square rosettes 50x50x10  
from pos.190.p.01 to pos.190.p.17  
or the square frames 50x50x10  
with hole square 37,5  
from pos.190.p.21 to pos.190.p.25  
and the medal square 37,5  
from pos.190.p.31 to pos.190.p.52

Position Article code	Description	Material	Color Finish	Packaging Outer pack.
190.q.73 MKRQ511C16/1801	Spring-loaded square rosette 50x50x10 mm, screw head hole and self-tapping screw hole with nuts, hole -A- d 16 mm, without neck, square 7 mm	polyamide polyacetal stainless steel	neutral -	500 x box 500
190.q.74 MKRQ511C16/1901	Spring-loaded square rosette 50x50x10 mm, screw head hole and self-tapping screw hole with nuts, hole -A- d 16 mm, neck -B- d 20 mm, square 7 mm	polyamide polyacetal stainless steel	neutral -	500 x box 500
190.q.75 MKRQ511C16/2001	Spring-loaded square rosette 50x50x10 mm, screw head hole and self-tapping screw hole with nuts, hole -A- d 16 mm, neck -B- d 21 mm, square 7 mm	polyamide polyacetal stainless steel	neutral -	500 x box 500
190.q.79 MKRQ511C16/2101	Spring-loaded square rosette 50x50x10 mm, screw head hole and self-tapping screw hole with nuts, hole -A- d 16 mm, without neck, square 8 mm	polyamide polyacetal stainless steel	neutral -	500 x box 500
190.q.80 MKRQ511C16/2201	Spring-loaded square rosette 50x50x10 mm, screw head hole and self-tapping screw hole with nuts, hole -A- d 16 mm, neck -B- d 20 mm, square 8 mm	polyamide polyacetal stainless steel	neutral -	500 x box 500
190.q.81 MKRQ511C16/2301	Spring-loaded square rosette 50x50x10 mm, screw head hole and self-tapping screw hole with nuts, hole -A- d 16 mm, neck -B- d 21 mm, square 8 mm	polyamide polyacetal stainless steel	neutral -	500 x box 500
190.q.85 MKRQ511C16/18AG	Spring-loaded square rosette 50x50x10 mm, screw head hole and self-tapping screw hole with nuts, hole -A- d 16 mm, without neck, square 7 mm	polyamide polyacetal stainless steel	silver -	500 x box 500
190.q.86 MKRQ511C16/19AG	Spring-loaded square rosette 50x50x10 mm, screw head hole and self-tapping screw hole with nuts, hole -A- d 16 mm, neck -B- d 20 mm, square 7 mm	polyamide polyacetal stainless steel	silver -	500 x box 500
190.q.87 MKRQ511C16/20AG	Spring-loaded square rosette 50x50x10 mm, screw head hole and self-tapping screw hole with nuts, hole -A- d 16 mm, neck -B- d 21 mm, square 7 mm	polyamide polyacetal stainless steel	silver -	500 x box 500
190.q.91 MKRQ511C16/21AG	Spring-loaded square rosette 50x50x10 mm, screw head hole and self-tapping screw hole with nuts, hole -A- d 16 mm, without neck, square 8 mm	polyamide polyacetal stainless steel	silver -	500 x box 500
190.q.92 MKRQ511C16/22AG	Spring-loaded square rosette 50x50x10 mm, screw head hole and self-tapping screw hole with nuts, hole -A- d 16 mm, neck -B- d 20 mm, square 8 mm	polyamide polyacetal stainless steel	silver -	500 x box 500
190.q.93 MKRQ511C16/23AG	Spring-loaded square rosette 50x50x10 mm, screw head hole and self-tapping screw hole with nuts, hole -A- d 16 mm, neck -B- d 21 mm, square 8 mm	polyamide polyacetal stainless steel	silver -	500 x box 500



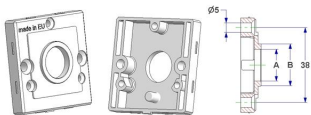
Special gross prices for big quantities:  
see details  
To be combined with:  
square rosettes 50x50x10  
from pos.190.p.01 to pos.190.p.17  
or the square frames 50x50x10  
with hole square 37,5  
from pos.190.p.21 to pos.190.p.25  
and the medal square 37,5  
from pos.190.p.31 to pos.190.p.52

Position Article code	Description	Material	Color Finish	Packaging Outer pack.
190.q.96 MKRQ511C16/25AG	Spring-loaded square rosette 50x50x10 mm, screw head hole and self-tapping screw hole with nuts, hole -A- d 16 mm, neck -B- d 21 mm, for milled lever	polyamide polyacetal stainless steel	silver -	500 x box 500
190.q.98 MKRQ511C16/28AG	Spring-loaded square rosette 50x50x10 mm, screw head hole and self-tapping screw hole with nuts, hole -A- d 16 mm, for milled lever	polyamide polyacetal stainless steel	silver -	500 x box 500



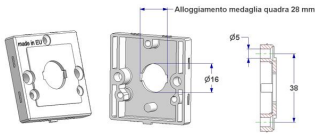
Special gross prices for big quantities:  
see details  
To be combined with:  
square rosettes 50x50x10  
from pos.190.p.01 to pos.190.p.17  
or the square frames 50x50x10  
with hole square 37,5  
from pos.190.p.21 to pos.190.p.25  
and the medal square 37,5  
from pos.190.p.31 to pos.190.p.52

Position Article code	Description	Material	Color Finish	Packaging Outer pack.
190.r.01 MKRQ511A16/0001	Square rose 50x50x10 mm, screw head holes without nuts, hole -A- d 16 mm, without neck, for spring	polyamide	neutral -	500 x bag 500
190.r.02 MKRQ511A16/0101	=Square rose 50x50x10 mm, screw head holes without nuts, hole -A- d 16 mm, neck -B- d 20 mm, for spring=	polyamide	neutral -	500 x bag 500
190.r.03 MKRQ511A16/0201	=Square rose 50x50x10 mm, screw head holes without nuts, hole -A- d 16 mm, neck -B- d 21 mm, for spring=	polyamide	neutral -	500 x bag 500
190.r.04 MKRQ511A16/0301	=Square rose 50x50x10 mm, screw head holes without nuts, hole -A- d 16 mm, neck -B- d 24 mm, for spring=	polyamide	neutral -	500 x bag 500
190.r.11 MKRQ511A18/0001	=Square rose 50x50x10 mm, screw head holes without nuts, hole -A- d 18 mm, without neck, for spring=	polyamide	neutral -	500 x bag 500
190.r.21 MKRQ511A16/00AG	Square rose 50x50x10 mm, screw head holes without nuts, hole -A- d 16 mm, without neck, for spring	polyamide	silver -	500 x bag 500
190.r.22 MKRQ511A16/01AG	=Square rose 50x50x10 mm, screw head holes without nuts, hole -A- d 16 mm, neck -B- d 20 mm, for spring=	polyamide	silver -	500 x bag 500
190.r.23 MKRQ511A16/02AG	Square rose 50x50x10 mm, screw head holes without nuts, hole -A- d 16 mm, neck -B- d 21 mm, for spring	polyamide	silver -	500 x bag 500
190.r.24 MKRQ511A16/03AG	Square rose 50x50x10 mm, screw head holes without nuts, hole -A- d 16 mm, neck -B- d 24 mm, for spring	polyamide	silver -	500 x bag 500
190.r.31 MKRQ511A18/00AG	Square rose 50x50x10 mm, screw head holes without nuts, hole -A- d 18 mm, without neck, for spring	polyamide	silver -	500 x bag 500
190.r.35 MKRQ511A18/04AG	Square rose 50x50x10 mm, screw head holes without nuts, hole -A- d 18 mm, neck -B- d 24 mm, for spring	polyamide	silver -	500 x bag 500
190.r.40 MKRQ511A16/02OC	=Square rose 50x50x10 mm, screw head holes without nuts, hole -A- d 16 mm, neck -B- d 21 mm, for spring=	polyamide	light gold -	500 x bag 500
190.r.44 MKRQ511A18/04OC	=Square rose 50x50x10 mm, screw head holes without nuts, hole -A- d 18 mm, neck -B- d 24 mm, for spring=	polyamide	light gold -	500 x bag 500
190.r.54 MKRQ511A16/02NA	Square rose 50x50x10 mm, screw head holes without nuts, hole -A- d 16 mm, neck -B- d 21 mm, for spring	polyamide	black -	500 x bag 500



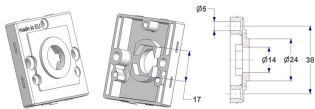
== : see details  
 To be combined with:  
 square rosettes 50x50x10  
 from pos.190.p.01 to pos.190.p.17  
 or the square frames 50x50x10  
 with hole square 37,5  
 from pos.190.p.21 to pos.190.p.25  
 and the medal square 37,5  
 from pos.190.p.31 to pos.190.p.52  
 the torsion spring thickness 2,5  
 at pos.348.b  
 the cam washers pos.349.a or 351.a  
 the circlip d 15 at pos.352.a

Position Article code	Description	Material	Color Finish	Packaging Outer pack.
190.r.61 MKRQ511M16/0001	Square rose 50x50x10 mm, screw head holes without nuts, hole d 16 mm, for medal square 28 mm, for spring	polyamide	neutral -	500 x bag 500
190.r.71 MKRQ511M16/00AG	=Square rose 50x50x10 mm, screw head holes without nuts, hole d 16 mm, for medal square 28 mm, for spring=	polyamide	silver -	500 x bag 500



== : see details  
 To be combined with:  
 square rosettes 50x50x10  
 from pos.190.p.01 to pos.190.p.17  
 or the square frames 50x50x10  
 with hole square 28 at pos.190.p.71  
 and the medal square 28  
 at pos.190.p.81  
 the torsion spring thickness 2,5  
 at pos.348.b  
 the cam washers pos.349.a or 351.a  
 the circlip d 15 at pos.352.a

Position Article code	Description	Material	Color Finish	Packaging Outer pack.
190.r.81 MKRQ511E14/00AG	Square rose 50x50x10 mm, screw head holes without nuts, hole d 14 mm, neck d 24 mm, with hexagon 17 mm for door knob	polyamide	silver -	500 x bag 500



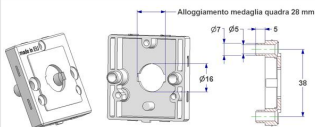
To be combined with:  
 square rosettes 50x50x10  
 from pos.190.p.01 to pos.190.p.17  
 or the square frames 50x50x10  
 with hole square 37,5  
 from pos.190.p.21 to pos.190.p.25  
 and the medal square 37,5  
 from pos.190.p.31 to pos.190.p.52

Position Article code	Description	Material	Color Finish	Packaging Outer pack.
190.s.01 MKRQ511A16/0401	=Square rose 50x50x10 mm, screw head holes with nuts, hole -A- d 16 mm, without neck, for spring=	polyamide	neutral -	500 x bag 500
190.s.02 MKRQ511A16/0501	=Square rose 50x50x10 mm, screw head holes with nuts, hole -A- d 16 mm, neck -B- d 20 mm, for spring=	polyamide	neutral -	500 x bag 500
190.s.03 MKRQ511A16/0601	=Square rose 50x50x10 mm, screw head holes with nuts, hole -A- d 16 mm, neck -B- d 21 mm, for spring=	polyamide	neutral -	500 x bag 500
190.s.04 MKRQ511A16/0701	=Square rose 50x50x10 mm, screw head holes with nuts, hole -A- d 16 mm, neck -B- d 24 mm, for spring=	polyamide	neutral -	500 x bag 500
190.s.11 MKRQ511A18/0101	=Square rose 50x50x10 mm, screw head holes with nuts, hole -A- d 18 mm, without neck, for spring=	polyamide	neutral -	500 x bag 500
190.s.21 MKRQ511A16/04AG	Square rose 50x50x10 mm, screw head holes with nuts, hole -A- d 16 mm, without neck, for spring	polyamide	silver -	500 x bag 500
190.s.22 MKRQ511A16/05AG	=Square rose 50x50x10 mm, screw head holes with nuts, hole -A- d 16 mm, neck -B- d 20 mm, for spring=	polyamide	silver -	500 x bag 500
190.s.23 MKRQ511A16/06AG	Square rose 50x50x10 mm, screw head holes with nuts, hole -A- d 16 mm, neck -B- d 21 mm, for spring	polyamide	silver -	500 x bag 500
190.s.24 MKRQ511A16/07AG	=Square rose 50x50x10 mm, screw head holes with nuts, hole -A- d 16 mm, neck -B- d 24 mm, for spring=	polyamide	silver -	500 x bag 500
190.s.31 MKRQ511A18/01AG	=Square rose 50x50x10 mm, screw head holes with nuts, hole -A- d 18 mm, without neck, for spring=	polyamide	silver -	500 x bag 500



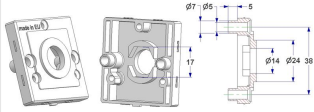
== : see details  
To be combined with:  
square rosettes 50x50x10  
from pos.190.p.01 to pos.190.p.17  
or the square frames 50x50x10  
with hole square 37,5  
from pos.190.p.21 to pos.190.p.25  
and the medal square 37,5  
from pos.190.p.31 to pos.190.p.52  
the torsion spring thickness 2,5  
at pos.348.b  
the cam washers pos.349.a or 351.a  
the circlip d 15 at pos.352.a

Position Article code	Description	Material	Color Finish	Packaging Outer pack.
190.s.61 MKRQ511M16/0101	=Square rose 50x50x10 mm, screw head holes with nuts, hole d 16 mm, for medal square 28 mm, for spring=	polyamide	neutral -	500 x bag 500
190.s.71 MKRQ511M16/01AG	=Square rose 50x50x10 mm, screw head holes with nuts, hole d 16 mm, for medal square 28 mm, for spring=	polyamide	silver -	500 x bag 500



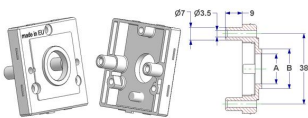
== : see details  
To be combined with:  
square rosettes 50x50x10  
from pos.190.p.01 to pos.190.p.17  
or the square frames 50x50x10  
with hole square 28 at pos.190.p.71  
and the medal square 28  
at pos.190.p.81  
the torsion spring thickness 2,5  
at pos.348.b  
the cam washers pos.349.a or 351.a  
the circlip d 15 at pos.352.a

Position Article code	Description	Material	Color Finish	Packaging Outer pack.
190.s.81 MKRQ511E14/01AG	=Square rose 50x50x10 mm, screw head holes with nuts, hole d 14 mm, neck d 24 mm, with hexagon 17 mm for door knob=	polyamide	silver -	500 x bag 500



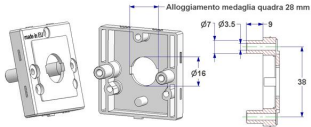
== : see details  
To be combined with:  
square rosettes 50x50x10  
from pos.190.p.01 to pos.190.p.17  
or the square frames 50x50x10  
with hole square 37,5  
from pos.190.p.21 to pos.190.p.25  
and the medal square 37,5  
from pos.190.p.31 to pos.190.p.52

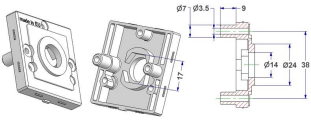
Position Article code	Description	Material	Color Finish	Packaging Outer pack.
190.t.01 MKRQ511A16/0801	=Square rose 50x50x10 mm, self-tapping screw holes with nuts, hole -A- d 16 mm, without neck, for spring=	polyamide	neutral -	500 x bag 500
190.t.02 MKRQ511A16/0901	=Square rose 50x50x10 mm, self-tapping screw holes with nuts, hole -A- d 16 mm, neck -B- d 20 mm, for spring=	polyamide	neutral -	500 x bag 500
190.t.03 MKRQ511A16/1001	=Square rose 50x50x10 mm, self-tapping screw holes with nuts, hole -A- d 16 mm, neck -B- d 21 mm, for spring=	polyamide	neutral -	500 x bag 500
190.t.04 MKRQ511A16/1101	=Square rose 50x50x10 mm, self-tapping screw holes with nuts, hole -A- d 16 mm, neck -B- d 24 mm, for spring=	polyamide	neutral -	500 x bag 500
190.t.11 MKRQ511A18/0201	=Square rose 50x50x10 mm, self-tapping screw holes with nuts, hole -A- d 18 mm, without neck, for spring=	polyamide	neutral -	500 x bag 500
190.t.21 MKRQ511A16/08AG	=Square rose 50x50x10 mm, self-tapping screw holes with nuts, hole -A- d 16 mm, without neck, for spring=	polyamide	silver -	500 x bag 500
190.t.22 MKRQ511A16/09AG	=Square rose 50x50x10 mm, self-tapping screw holes with nuts, hole -A- d 16 mm, neck -B- d 20 mm, for spring=	polyamide	silver -	500 x bag 500
190.t.23 MKRQ511A16/10AG	=Square rose 50x50x10 mm, self-tapping screw holes with nuts, hole -A- d 16 mm, neck -B- d 21 mm, for spring=	polyamide	silver -	500 x bag 500
190.t.24 MKRQ511A16/11AG	=Square rose 50x50x10 mm, self-tapping screw holes with nuts, hole -A- d 16 mm, neck -B- d 24 mm, for spring=	polyamide	silver -	500 x bag 500
190.t.31 MKRQ511A18/02AG	=Square rose 50x50x10 mm, self-tapping screw holes with nuts, hole -A- d 18 mm, without neck, for spring=	polyamide	silver -	500 x bag 500



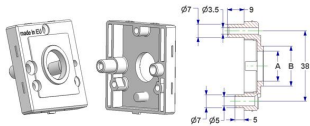
== : see details  
To be combined with:  
square rosettes 50x50x10  
from pos.190.p.01 to pos.190.p.17  
or the square frames 50x50x10  
with hole square 37,5  
from pos.190.p.21 to pos.190.p.25  
and the medal square 37,5  
from pos.190.p.31 to pos.190.p.52  
the torsion spring thickness 2,5  
at pos.348.b  
the cam washers pos.349.a or 351.a  
the circlip d 15 at pos.352.a



Position Article code	Description	Material	Color Finish	Packaging Outer pack.
190.t.61 MKRQ511M16/0201	=Square rose 50x50x10 mm, self-tapping screw holes with nuts, hole d 16 mm, for medal square 28 mm,for spring=	polyamide	neutral -	500 x bag 500
190.t.71 MKRQ511M16/02AG	=Square rose 50x50x10 mm, self-tapping screw holes with nuts, hole d 16 mm, for medal square 28 mm, for spring=	polyamide	silver -	500 x bag 500
		To be combined with: square rosettes 50x50x10 from pos.190.p.01 to pos.190.p.17 or the square frames 50x50x10 with hole square 28 at pos.190.p.71 and the medal square 28 at pos.190.p.81 the torsion spring thickness 2,5 at pos.348.b the cam washers pos.349.a or351.a the circlip d 15 at pos.352.a		

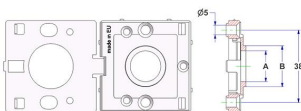
Position Article code	Description	Material	Color Finish	Packaging Outer pack.
190.t.81 MKRQ511E14/0201	=Square rose 50x50x10 mm, self-tapping screw holes with nuts, hole d 14 mm, neck d 24 mm, with hexagon 17 mm for door knob=	polyamide	neutral -	500 x bag 500
		== : see details To be combined with: square rosettes 50x50x10 from pos.190.p.01 to pos.190.p.17 or the square frames 50x50x10 with hole square 37,5 from pos.190.p.21 to pos.190.p.25 and the medal square 37,5 from pos.190.p.31 to pos.190.p.52		

Position Article code	Description	Material	Color Finish	Packaging Outer pack.
190.u.01 MKRQ511A16/1201	=Square rose 50x50x10 mm, screw head hole and self-tapping screw hole with nuts, hole -A- d 16 mm, without neck, for spring=	polyamide	neutral -	500 x bag 500
190.u.02 MKRQ511A16/1301	=Square rose 50x50x10 mm, screw head hole and self-tapping screw hole with nuts, hole -A- d 16 mm, neck -B- d 20 mm, for spring=	polyamide	neutral -	500 x bag 500
190.u.03 MKRQ511A16/1401	=Square rose 50x50x10 mm, screw head hole and self-tapping screw hole with nuts, hole -A- d 16 mm, neck -B- d 21 mm, for spring=	polyamide	neutral -	500 x bag 500
190.u.04 MKRQ511A16/1501	=Square rose 50x50x10 mm, screw head hole and self-tapping screw hole with nuts, hole -A- d 16 mm, neck -B- d 24 mm, for spring=	polyamide	neutral -	500 x bag 500
190.u.11 MKRQ511A18/0301	=Square rose 50x50x10 mm, screw head hole and self-tapping screw hole with nuts, hole -A- d 18 mm, without neck, for spring=	polyamide	neutral -	500 x bag 500
190.u.21 MKRQ511A16/12AG	=Square rose 50x50x10 mm, screw head hole and self-tapping screw hole with nuts, hole -A- d 16 mm, without neck, for spring=	polyamide	silver -	500 x bag 500
190.u.22 MKRQ511A16/13AG	=Square rose 50x50x10 mm, screw head hole and self-tapping screw hole with nuts, hole -A- d 16 mm, neck -B- d 20 mm, for spring	polyamide	silver -	500 x bag 500
190.u.23 MKRQ511A16/14AG	=Square rose 50x50x10 mm, screw head hole and self-tapping screw hole with nuts, hole -A- d 16 mm, neck -B- d 21 mm, for spring=	polyamide	silver -	500 x bag 500
190.u.24 MKRQ511A16/15AG	=Square rose 50x50x10 mm, screw head hole and self-tapping screw hole with nuts, hole -A- d 16 mm, neck -B- d 24 mm, for spring=	polyamide	silver -	500 x bag 500
190.u.31 MKRQ511A18/03AG	=Square rose 50x50x10 mm, screw head hole and self-tapping screw hole with nuts, hole -A- d 18 mm, without neck, for spring=	polyamide	silver -	500 x bag 500
190.u.35 MKRQ511A18/05AG	=Square rose 50x50x10 mm, screw head hole and self-tapping screw hole with nuts, hole -A- d 18 mm, neck -B- d 24 mm, for spring=	polyamide	silver -	500 x bag 500



== : see details  
 To be combined with:  
 square rosettes 50x50x10  
 from pos.190.p.01 to pos.190.p.17  
 or the square frames 50x50x10  
 with hole square 37,5  
 from pos.190.p.21 to pos.190.p.25  
 and the medal square 37,5  
 from pos.190.p.31 to pos.190.p.52  
 the torsion spring thickness 2,5  
 at pos.348.b  
 the cam washers pos.349.a or 351.a  
 the circlip d 15 at pos.352.a

Position Article code	Description	Material	Color Finish	Packaging Outer pack.
190.u.45 MKRQ511B16/00AG	Square rose 50x50x10 mm, screw head holes without nuts, hole -A- d 16 mm, neck -B- d 21 mm, without spring	polyamide	silver -	500 x bag 500
190.u.46 MKRQ511B16/01AG	Square rose 50x50x10 mm, screw head holes without nuts, hole -A- d 16 mm, without neck, without spring	polyamide	silver -	500 x bag 500



To be combined with:  
 square rosettes 50x50x10  
 from pos.190.p.01 to pos.190.p.17  
 or the square frames 50x50x10  
 with hole square 37,5  
 from pos.190.p.21 to pos.190.p.25  
 and the medal square 37,5  
 from pos.190.p.31 to pos.190.p.52

Position Article code	Description	Material	Color Finish	Packaging Outer pack.
190.u.50 MKRQ511B16/02AG	Square rose 50x50x10 mm, screw head holes with nuts, hole -A- d 16 mm, without neck, without spring	polyamide	silver -	500 x bag 500
190.u.51 MKRQ511B16/0201	Square rose 50x50x10 mm, screw head holes with nuts, hole -A- d 16 mm, without neck, without spring	polyamide	neutral -	500 x bag 500

To be combined with:  
square rosettes 50x50x10  
from pos.190.p.01 to pos.190.p.17  
or the square frames 50x50x10  
with hole square 37,5  
from pos.190.p.21 to pos.190.p.25  
and the medal square 37,5  
from pos.190.p.31 to pos.190.p.52

Position Article code	Description	Material	Color Finish	Packaging Outer pack.
190.u.55 MKRQ511B16/03AG	Square rose 50x50x10 mm, self-tapping screw holes with nuts, hole -A- d 16 mm, without neck, without spring	polyamide	silver -	500 x bag 500

To be combined with:  
square rosettes 50x50x10  
from pos.190.p.01 to pos.190.p.17  
or the square frames 50x50x10  
with hole square 37,5  
from pos.190.p.21 to pos.190.p.25  
and the medal square 37,5  
from pos.190.p.31 to pos.190.p.52

Position Article code	Description	Material	Color Finish	Packaging Outer pack.
190.u.61 MKRQ511M16/0301	=Square rose 50x50x10 mm, screw head hole and self-tapping screw hole with nuts, hole d 16 mm, for medal square 28 mm, for spring=	polyamide	neutral -	500 x bag 500
190.u.71 MKRQ511M16/03AG	=Square rose 50x50x10 mm, screw head hole and self-tapping screw hole with nuts, hole d 16 mm, for medal square 28 mm, for spring=	polyamide	silver -	500 x bag 500

== : see details  
To be combined with:  
square rosettes 50x50x10  
from pos.190.p.01 to pos.190.p.17  
or the square frames 50x50x10  
with hole square 28 at pos.190.p.71  
and the medal square 28  
at pos.190.p.81  
the torsion spring thickness 2,5  
at pos.348.b  
the cam washers pos.349.a or 351.a  
the circlip d 15 at pos.352.a