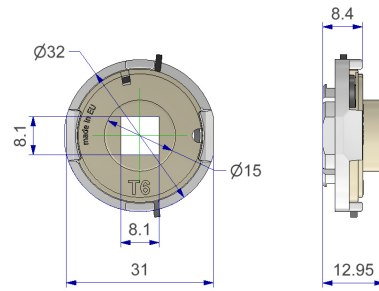
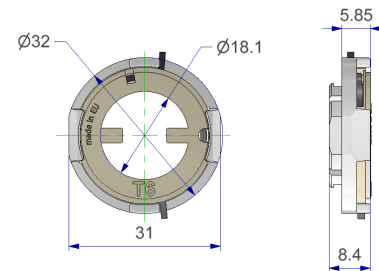
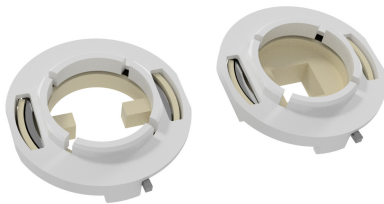


## RIGHT-LEFT SPRING T6 d32 hole 18 mm



description: **Right-left spring T6 d32 square 8 mm hole 18 mm**

code: **[MAM0326000/02AG](#)**



description: **Right-Left spring T6 d32 hole 18 mm for milled lever**

code: **[MAM0326000/03NB](#)**

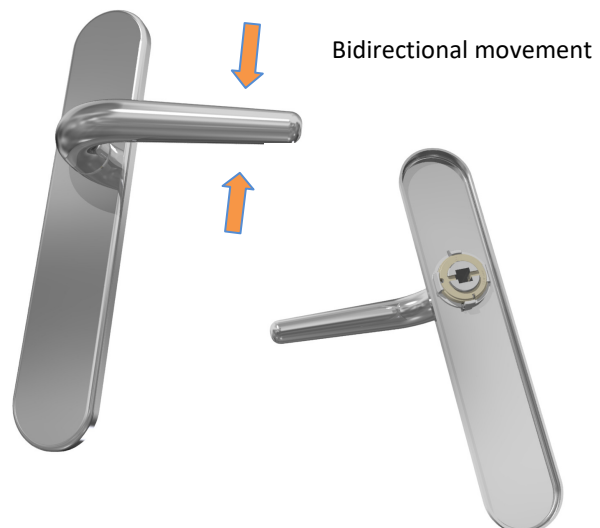
**BI-DIRECTIONAL**

**CLIP-ON FIXATION**

**ADAPTABLE**



The spring clips on the shaped hole of the metal plate



Bidirectional movement

- The T6 spring hole d18 mm clips on the shaped hole of plates 1.4 mm
- The shaped hole avoid the rotation of the spring during the use of the handle
- Available with square 8 mm and for milled lever
- The fixation between spring and plate is simple, fast end intuitive
- The springs move right and left way
- Can be used for all widths of plates >32 mm