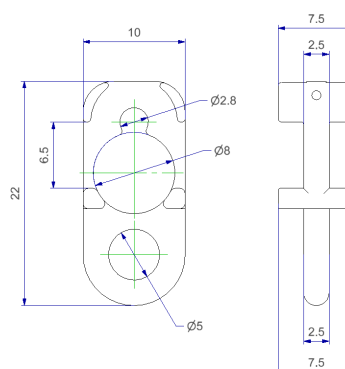


Easy gliding

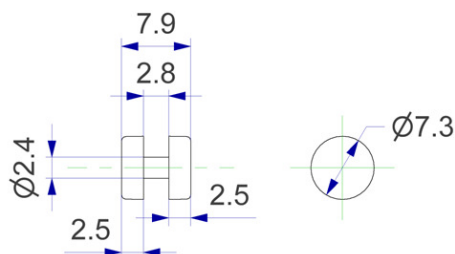
Adapt for 4 mm rail

Wave effect



Cord G7 with Closed body h22 nu2.5 spacing 80 mm WITHOUT roller

code: [ARS6860H80/00BA](#)



Roller d 7.6 mm, nucleus d 2.5 mm for U rail 4 mm

code: [ARS686TB00/0001](#)

